



MONOGRAPH

INTRAVESICAL PETHIDINE

For Bladder Use Only

Scope (Staff):	Medical, Pharmacy, Nursing
Scope (Area):	All Clinical Areas

Child Safe Organisation Statement of Commitment

CAHS commits to being a child safe organisation by applying the National Principles for Child Safe Organisations. This is a commitment to a strong culture supported by robust policies and procedures to reduce the likelihood of harm to children and young people.

This document should be read in conjunction with this [DISCLAIMER](#)

! HIGH RISK MEDICINE !

QUICKLINKS

Dosage/Dosage Adjustments	Administration	Compatibility	Monitoring
---	--------------------------------	-------------------------------	----------------------------

DRUG CLASS

Pethidine (also known as Meperidine) is a synthetic opioid that exerts local anaesthetic effect.¹ Intravesical pethidine may be administered via a urethral or suprapubic tube that is placed in the bladder, as specified by the prescriber.^{2, 3} This intravesical tube may be a Foley catheter or a feeding tube.^{2, 3}

Pethidine is a [High Risk Medicine](#).

INDICATIONS AND RESTRICTIONS

- Treatment of bladder spasm post-ureteral implantation or other bladder surgery, under the direction of a Urologist.²
- Site of administration (i.e. intravesical and catheter type) must be specified on the medication order.

CONTRAINDICATIONS

- Hypersensitivity to pethidine or any component of the formulation.¹

FORMULATIONS

Listed below are products available at PCH, other formulations may be available, check with pharmacy if required:

- 50 mg/mL ampoule.

Imprest location: [Formulary One](#)

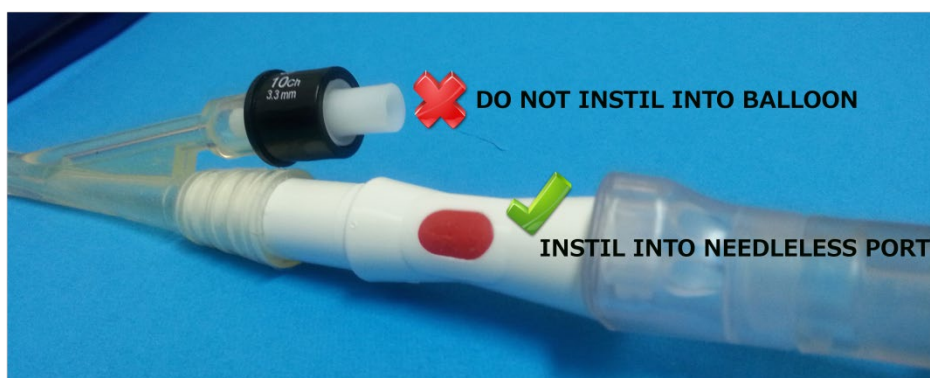
DOSAGE & DOSAGE ADJUSTMENTS

≥ 18 months of age: 1 mg/kg (max 100 mg) 4 hourly.²

Dosing in Overweight and Obese Children: Dosing is based on actual body weight.²

RECONSTITUTION & ADMINISTRATION^{2,3}

1. Draw up prescribed dose in a Luer **slip** syringe.
2. In a separate Luer **slip** syringe, draw up 5 mL of sodium chloride 0.9%
3. Drain all catheters
4. Clamp suprapubic (SPC) and/or indwelling catheters (IDC) immediately distal (as close as possible) to the needleless ports. **Do not clamp externalised ureteric catheters.**
5. Swab the site of administration with antiseptic wipes.
6. Slowly instil pethidine through the specified site of administration that directly accepts a standard Luer **slip** syringe nozzle. **Do not instil into balloon of catheter.**



7. Flush with 5 mL of sodium chloride 0.9%.
8. Leave all catheters clamped for as long as tolerated by the child, up to a maximum duration of 30 minutes.

COMPATIBILITY (LIST IS NOT EXHAUSTIVE)⁴

Compatible fluids: sodium chloride 0.9%, glucose 5%

Compatible at Y-site: n/a

Only commonly used drugs are listed below. This is not a complete list of incompatible drugs. [Compatibilities of IV drugs](#) must be checked when two or more drugs are given concurrently.

INCOMPATIBLE drugs: n/a

MONITORING

Assess and document pain scores:

- Immediately before instillation.
- During instillation.
- At 10, 20, 30 and 60 minutes after instillation.

Document baseline and post dose heart rate, level of sedation, respiration rate, oxygen saturation and blood pressure.

ADVERSE EFFECTS

Common: May cause local irritation.¹

STORAGE

Store below 25°C, protected from light.¹

Pethidine is a Schedule 8 (S8) medication and must be handled in accordance with the [Schedule 8 and Restricted Schedule 4 Medication Policy](#).

INTERACTIONS

This medication may interact with other medications; consult PCH approved references (e.g. [Clinical Pharmacology](#)), a clinical pharmacist or PCH Medicines Information Service on extension 63546 for more information.

Please note: The information contained in this guideline is to assist with the preparation and administration of **intravesical pethidine**. Any variations to the doses recommended should be clarified with the prescriber prior to administration

Related CAHS internal policies, procedures and guidelines

[Clinical Practice Manual: Pain Assessment](#)



[Schedule 8 and Restricted Schedule 4 Medication Policy](#)

References

1. MIMS Online, 2024. [Available from [MIMS | MIMS | Full Product Information \(health.wa.gov.au\)](#)]

2. Barker A, Samnakay N, Sommerfield, D. Intravesical pethidine (expert opinion), 2024. Perth Children's Hospital, WA:2024 Oct 07.
3. Allan D, Sim I. Intravesical pethidine administration (expert opinion), 2014. Princess Margaret Hospital for Children, WA:2017 Dec 01.
4. Australian Injectable Drugs Handbook, 9th edition, accessed 18/6/2024 [[AIDH - PETHIDINE \(health.wa.gov.au\)](https://www.health.wa.gov.au)]

This document can be made available in alternative formats on request for a person with a disability.

File Path:	W:\Safety & Quality\CAHS\CLOVERS MEDICAL Pharmacy\Procedures Protocols and Guidelines\Medication Monographs_Word\PCH.MED.PethidineIntravesical.DOCX		
Document Owner:	Chief Pharmacist		
Reviewer / Team:	Senior Pharmacist, Ward 2B SDN, Consultant Surgeon, Consultant Surgeon, Consultant Anaesthetist and Pain Specialist,		
Date First Issued:	April/2014	Last Reviewed:	Nov 2024
Amendment Dates:	July 2024	Next Review Date:	Nov 2027
Approved by:	Medication Safety Committee	Date:	Nov 2024
Endorsed by:	Drugs and Therapeutics Committee	Date:	Dec 2024
Standards Applicable:	NSQHS Standards:   Child Safe Principles: N/A		

Printed or personally saved electronic copies of this document are considered uncontrolled



Healthy kids, healthy communities

Compassion

Excellence

Collaboration

Accountability

Equity

Respect

Neonatology | Community Health | Mental Health | Perth Children's Hospital