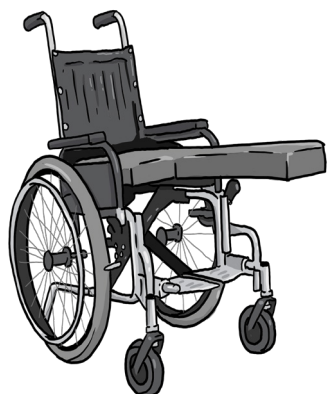




Leg board

After the orthopaedic surgery bub needs to spend the next few weeks with their leg(s) out straight.

A leg board is made for bub and has a strap to attach it to the wheelchair.

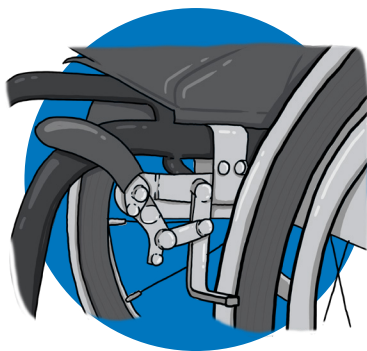


Using the leg board

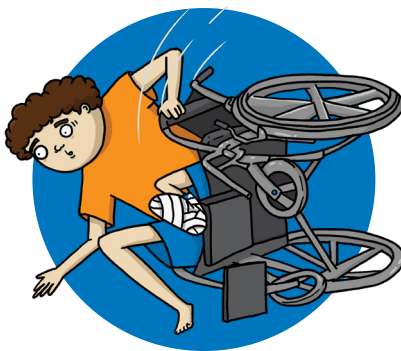
- Place the leg board on the base of the wheelchair seat, touching the back of the seat.
- Undo the buckle on the strap and put the strap under the wheelchair seat.
- When bub is sitting in the wheelchair, attach the buckle and tighten the strap so the board is held in place.
- You will need to remove the leg board if you need to fold the wheelchair.



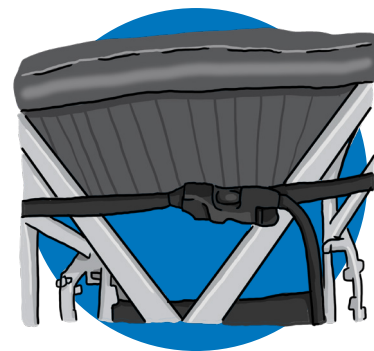
Care instructions



It is important to use the brakes when bub is moving on or off the seat



Wheelchairs can tip, sit right back in the seat



Tighten all belts and straps

If you see any rough edges, torn foam, flat wheels, loose straps **call the Equipment Consumables Service at PCH on (08) 6456 0406**

Other comments:

If you have any questions about your legboard please call your Occupational Therapist:

Name _____ Phone: (08) 6456 0406



Government of **Western Australia**
Child and Adolescent Health Service

Child and Adolescent Health Service
15 Hospital Avenue, Nedlands, WA, 6009.
Telephone: (08) 6456 2222
Produced by: Occupational Therapy / Social Work
Ref: 368.1 © CAHS 2021

**This document can be made available in alternative
formats on request for a person with a disability.**

Disclaimer: This publication is for general education
and information purposes. Contact a qualified
healthcare professional for any medical advice needed.

© State of Western Australia, Child and Adolescent
Health Service.

